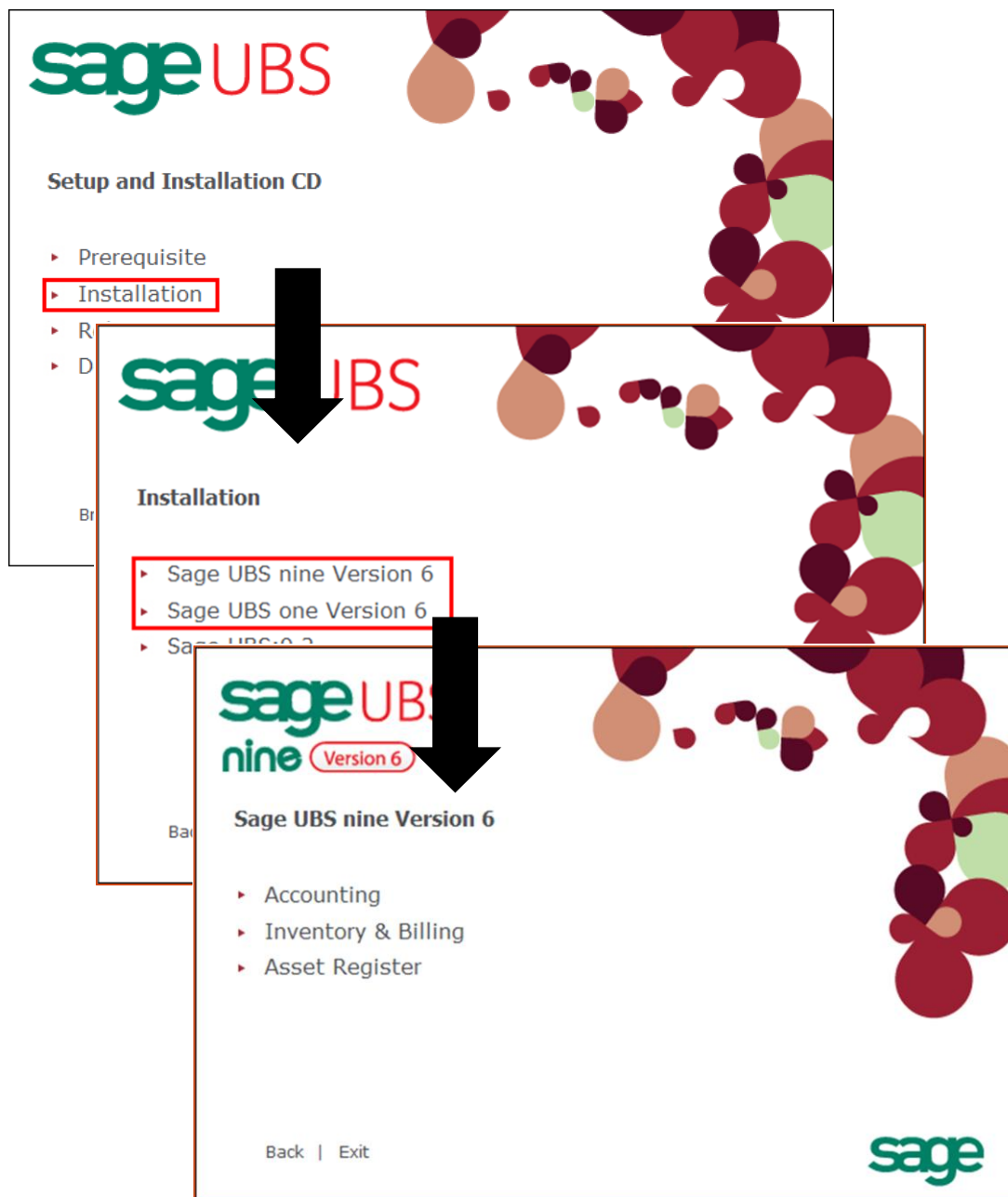


Sage UBS version 6 – Installation Guide

1. Insert the Sage UBS nine version 6 installation CD into the CD-ROM drive and wait for the Setup and Installation CD screen to appear. If the screen does not appear automatically, select the CD-ROM drive in **My Computer** or **Computer** and run the **Autorun.exe**.
2. In the **Setup and Installation CD** page, select **Installation**. Then select **Sage UBS nine version 6** or **Sage UBS one version 6**. After that, select the product you would like to install.



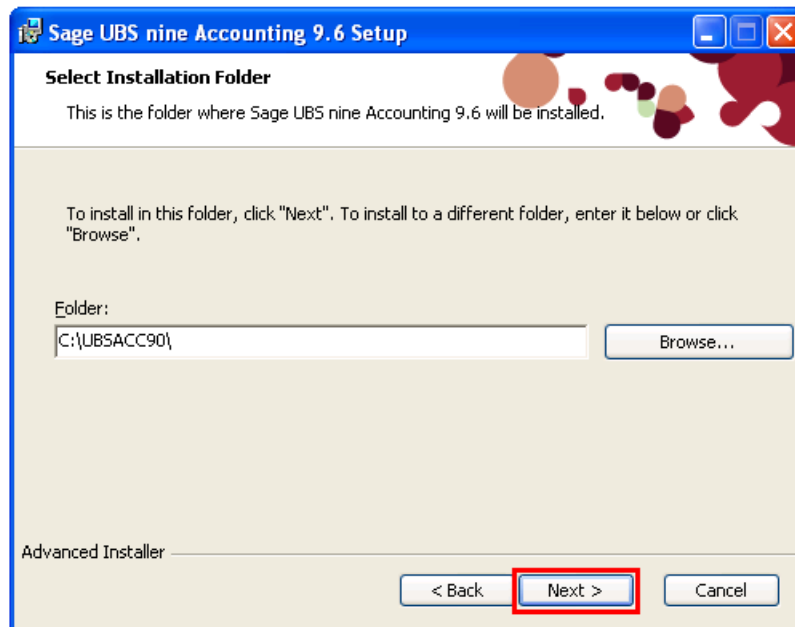
3. In the **Welcome** page, click **Next**.



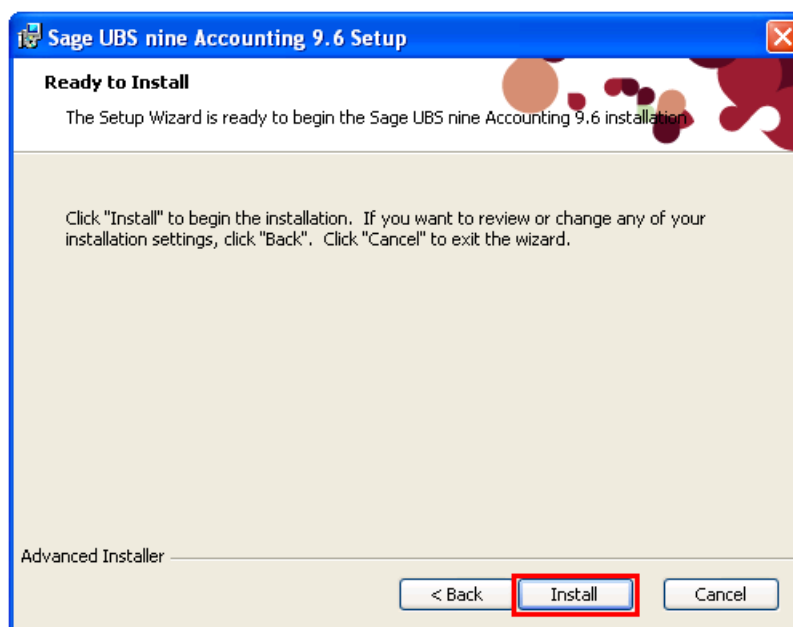
4. In the **End User License Agreement** page, select **I accept the terms in the License Agreement** and click **Next**.

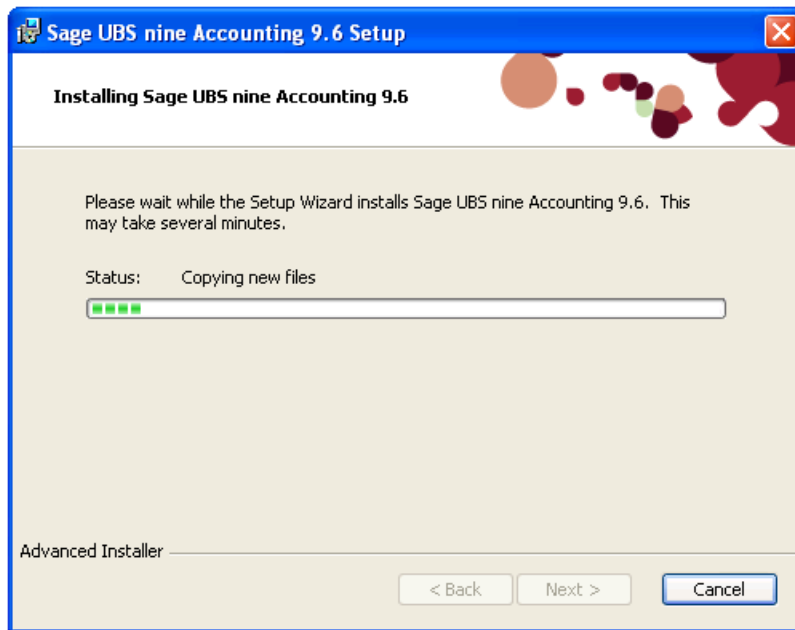


- Click on the **Browse** button to specify the installation folder if you would like to install the system in another drive or folder. Click **Next** to continue.



- In the **Ready to Install** page, click **Install** and the installation process will be started.





7. When the installation process is completed, click **Finish**.



8. After installation, a Sage UBS icon will be created on the desktop.



*** The End ***