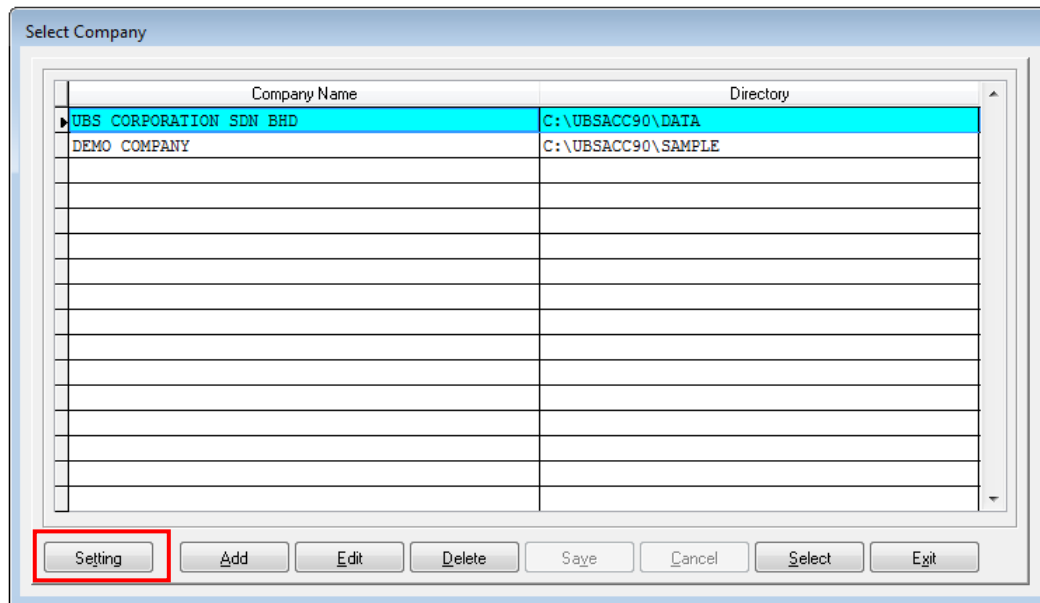


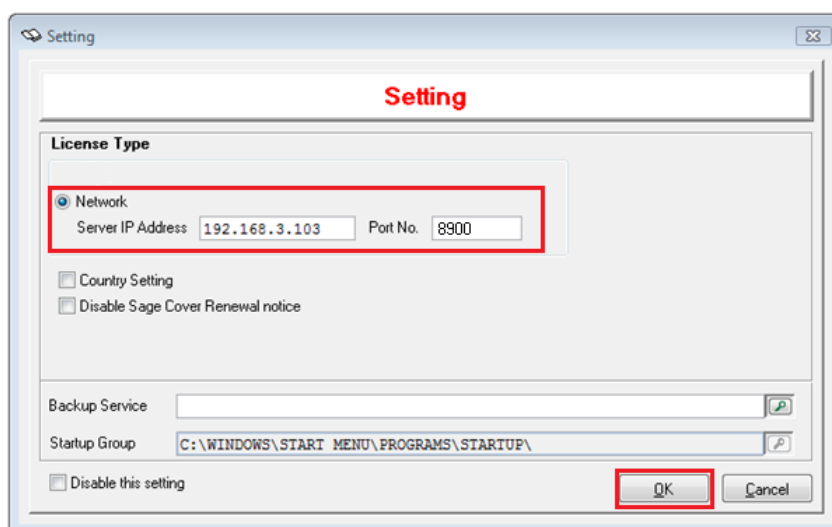
Sage UBS nine version 6 – License Detection for Multi-users environment

At the server

1. After the license has been activated successfully. In the **Select Company** screen, click **Setting**.

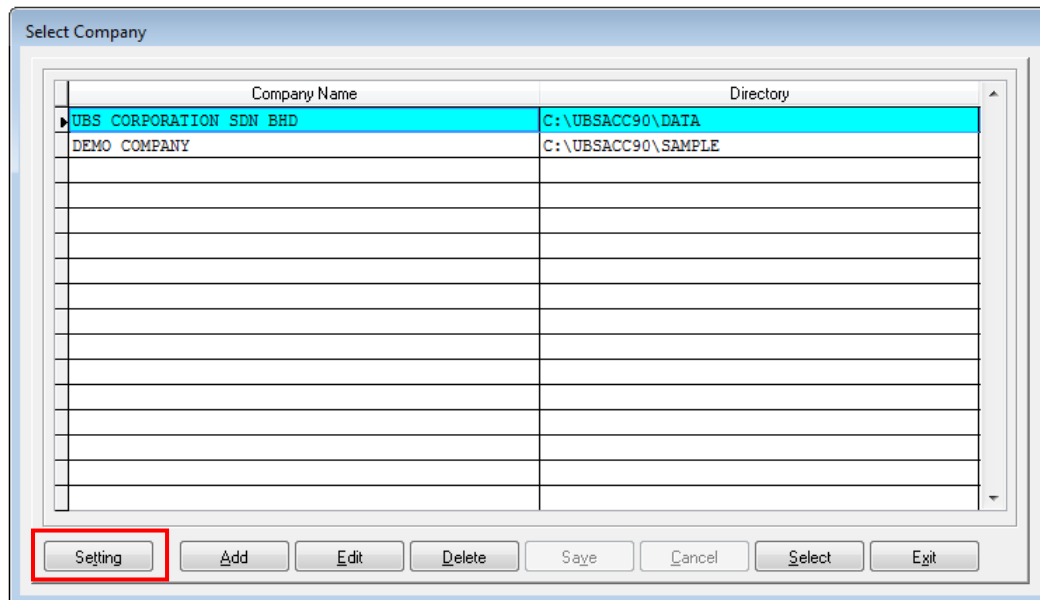


2. Select **Network**, enter the IP of the server and port number – 8900. Click **OK**.

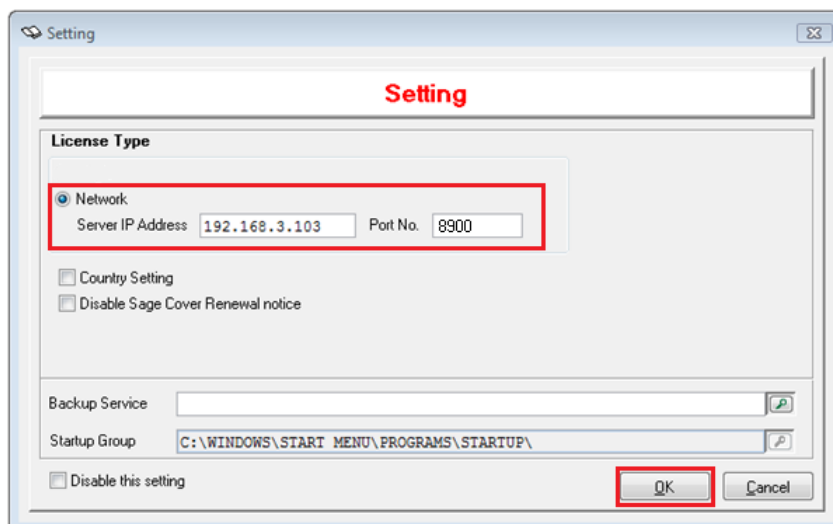


At the client

1. In the **Select Company** screen, click **Setting**.



2. Select **Network**, enter the IP of the server and port number – 8900. Click **OK**.



*** The End ***